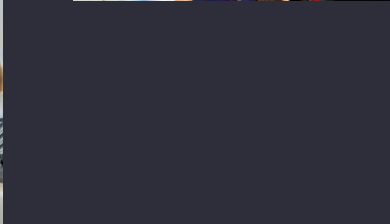
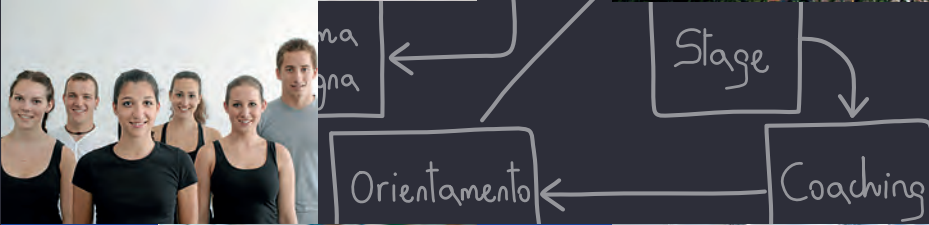


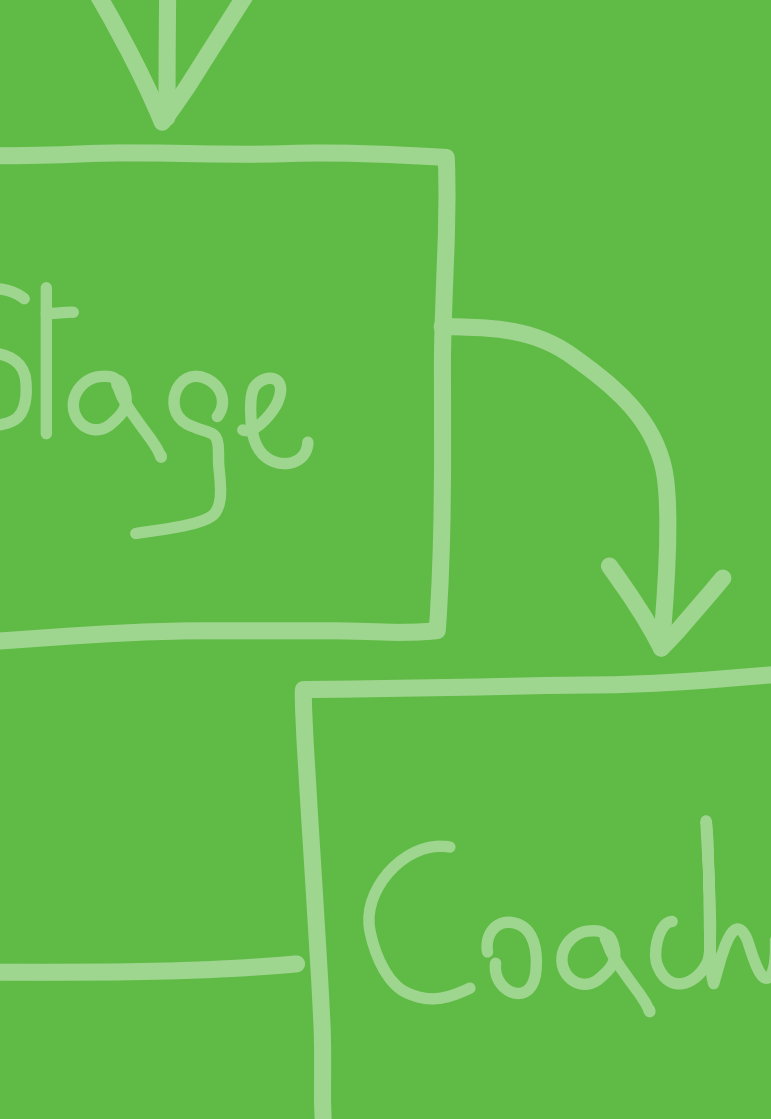


University of Applied Sciences and Arts of Southern Switzerland

SUPSI

Study Guide





University of Applied Sciences and Arts of Southern Switzerland

SUPSI

Study Guide

The University of the future

To provide educational programmes specifically aimed at giving its students the knowledge and skills that will facilitate their search for appropriate employment.

To ensure the acquisition of a specialist, methodological, social and personal store of knowledge that, with the required degree of flexibility, will permit personal career development in line with individual potential and expectations. To enable those who wish to do so to continue their studies in Switzerland or abroad, benefiting from the mobility opportunities provided by the Bologna reform.

These are three of the main principles on which is based the education provided by the University of Applied Sciences and Arts of Southern Switzerland (SUPSI) presented in this Guide, which we hope will assist you in the important choices you are about to make.

Drawing inspiration from our guiding values of strength, originality, multidisciplinary, partnership, innovation, territoriality and internationality, our Bachelor's and Master's programmes have been designed with the aim of combining classical technical-scientific methods with a practical and professional approach. In direct contact with the teaching staff, which consists of professors-researchers and professionals who conduct established activities outside the university, problems and situations are tackled in their context, adopting methodologies resembling those to be found after graduation.

In order to meet the growing need for balance between study requirements and work or other commitments, courses are, whenever possible, also conducted in parallel with professional activity, or in flexibility format.

We will be delighted to welcome you if you choose our University. I hope that you will choose carefully and astutely, and that your future will be rewarding.

Prof. Eng. Franco Gervasoni
SUPSI Director

Strength in teaching, research and service provision activities, responsive, in terms of form and content, to the real needs of the user.

Originality, as the ability to utilise methodologies integrating theory and practice, and with a flexible organisational structure that can give a balanced appreciation to issues of identity and difference.

Multidisciplinarity, as the approach integrating diverse fields of knowledge in order to solve complex problems, combining the economic, environmental and social aspects of sustainability.

Partnership internally, with academic institutions and with other public and private bodies, in order to perform synergically and effectively.

Innovation, as a constant fundamental objective, in order to adopt a pro-active stance in predicting the future developments of a rapidly evolving situation.

Territoriality, as the special focus to be placed on the needs of a particular region when executing institutional mandates.

Internationality, to create opportunities for international cooperation and mobility for students, professors and researchers.

SUPSI: a brief description

The University of Applied Sciences and Arts of Southern Switzerland (SUPSI), one of the nine Swiss vocational universities, has university statute, it focuses on vocational education and applied research, and it is part of the Bologna process, meaning that SUPSI qualifications are recognized both in Switzerland and in Europe.

SUPSI degree courses give students the possibility of combining their academic studies with invaluable work experience, a fundamental asset for future employment.

The high-quality teaching modules are inter-mixed with periods of work experience and laboratory time, all of which help students gain an understanding of their local geographic context, while also ensuring they are able to compete strongly on an international level.

Over three thousand students are currently enrolled at SUPSI: they have decided to study in a multi-cultural, inter-disciplinary and innovative environment. The teaching method fosters close student-professor contact, together with close correspondence between theory and practice by means of case studies and concrete applications. Professors often also conduct research or operate professionally outside the university, enabling students to benefit from a didactic method that combines theory and practice in one single formative programme.



Bachelor's courses, and some Master's courses, are conducted in the following fields: social science, economics, health care, education and teaching, construction, engineering and IT, design, music and theatre. The teaching style adopted is distinctive and cutting-edge. Research plays a leading role at SUPSI, and is applied in key areas by means of projects that are won in competitions held by major European and Swiss agencies, or that are commissioned by companies and institutions.

Source: Annual Report 2010

2'989 Students in Bachelor's programmes

401 Students in Master's programmes

8'223 Students in Continuing Education programmes

Bachelor's Courses

Architecture, Construction and Planning

Architecture

Full-time (180 ECTS over 3 years)
In parallel with professional activity
(180 ECTS over 4 years)

Bachelor of Arts in Architecture

Civil Engineering

Full-time (180 ECTS over 3 years)
In parallel with professional activity
(180 ECTS over 4 years)

Bachelor of Science in Civil Engineering

Geomatics

Full-time (180 ECTS over 3 years)

Bachelor of Science in Geomatics

Design

Interior Design

Full-time (180 ECTS over 3 years)

Bachelor of Arts in Interior Design

Visual Communication

Full-time (180 ECTS over 3 years)
Flexibility (180 ECTS over 4 years)

Bachelor of Arts in Visual Communication

Conservation

Full-time (180 ECTS over 3 years)

Bachelor of Arts in Conservation

Teacher Training

Pre-primary Education

Full-time (180 ECTS over 3 years)

Bachelor of Arts in Pre-primary Education

Primary Education

Full-time (180 ECTS over 3 years)

Bachelor of Arts in Primary Education

Healthcare

Nursing

Full-time (180 ECTS over 3 years)

Bachelor of Science in Nursing

Occupational Therapy

Full-time (180 ECTS over 3 years)

Bachelor of Science in Occupational

Therapy

Physiotherapy

Full-time (180 ECTS over 3 years)

Bachelor of Science in Physiotherapie

Physiotherapie (Landquart) (in German)

Full-time (180 ECTS over 3 years)

Bachelor of Science in Physiotherapie

Business Management

Business Administration

Full-time (180 ECTS over 3 years)

In parallel with professional activity
(180 ECTS over 4 years)

Flexibility (180 ECTS over 4 years)

Bachelor of Science in Business Administration

Social Work

Social Work

Full-time (180 ECTS over 3 years)

In parallel with professional activity
(180 ECTS over 4 years)

Flexibility (180 ECTS over 4 years)

Bachelor of Science in Social Work

Music, Theatre and other Arts

Music

Full-time (180 ECTS over 3 years)

Bachelor of Arts in Music

Music and Movement

Full-time (180 ECTS over 3 years)

Bachelor of Arts in Music and Movement

Theatre

Full-time (180 ECTS over 3 years)

Bachelor of Arts in Theatre

Engineering and IT

Electrical Engineering

Full-time (180 ECTS over 3 years)

Bachelor of Science in Electrical Engineering

Engineering and Management

Full-time (180 ECTS over 3 years)

In parallel with professional activity
(180 ECTS over 4 years)

Bachelor of Science in Engineering and Management

Computer Science

Full-time (180 ECTS over 3 years)

In parallel with professional activity
(180 ECTS over 4 years)

Bachelor of Science in Computer Science

Mechanical Engineering

Full-time (180 ECTS over 3 years)

Bachelor of Science in Mechanical Engineering

Master's Courses

Design

Conservation and Restoration

Full-time (120 ECTS over 2 years)
In parallel with professional activity
(120 ECTS over 4 years)
**Master of Arts in Conservation-
Restoration**

Teacher Training

Lower Secondary School Teaching

Full-time/flexible (94 ECTS over 2 years
for one subject; 104 ECTS for two subjects)
**Master of Arts in Lower Secondary
School Teaching**

Upper Secondary School Teaching

Full-time/flexible (96 ECTS over 2 years for
one subject; 110 ECTS for two subjects)
**Master of Arts in Upper Secondary
School Teaching**

Business Management

Business Administration - Major in Innovation Management

In parallel with professional activity
(90 ECTS over 2 years)
Flexibility (90 ECTS over 2 years)
**Master of Science in Business
Administration with Major
in Innovation Management**

Business Administration - Major in Innovation Management (in German)

Distance learning (only 20% classroom
teaching) 90 ECTS over 2 years
**Master of Science in Business
Administration with Major
in Innovation Management**

Social Work

Social Work

Full-time (90 ECTS over 3 semesters)
Part-time (90 ECTS over 6 semesters)
Master of Arts HES-SO en Travail social

Music, Theatre and other Arts

Music Performance

Full-time (120 ECTS)
Master of Arts in Music Performance

Music Pedagogy

Full-time (120 ECTS)
Master of Arts in Music Pedagogy

Music Composition and Theory

Full-time (120 ECTS)
**Master of Arts in Music Composition
and Theory**

Specialized Music Performance

Full-time (120 ECTS)
**Master of Arts in Specialized
Music Performance**

Theatre

Full-time (90 ECTS over 18 months)
Master of Arts in Theatre

Engineering and IT

Engineering

Full-time or Part-time (90 ECTS), from 3
and 6 semesters, according to the study
programme

**Master of Science in Engineering with
Specialization in:**

- **Business Engineering and Production**
- **Energy and Environment**
- **Industrial Technologies**
- **Information and communication
technologies**
- **Public Planning, Construction & Building
Technology**

Informatics

In collaboration with the University
of Lugano

**Master of Science in Informatics,
Major in Applied Informatics**

Full-time or part-time
(90 ECTS over 3 semesters)

**Master of Science in Informatics,
Major in Intelligent Systems**

Full-time or part-time
(120 ECTS over 4 semesters)

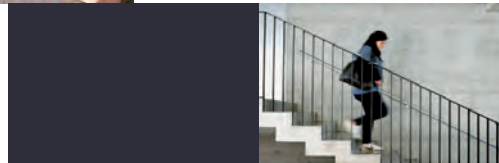
Studying at SUPSI

What does it mean?

Students embarking on a university career at SUPSI approach their studies while also thinking sensibly about their future careers. In a world increasingly marked by uncertainty, SUPSI provides a clear and tangible range of options. In fact, the aim is to instil in students the knowledge and skills required for a prompt and effective professional integration.

Studying at SUPSI ensures that students acquire specialist, methodological, social and personal knowledge that will subsequently enable them to develop career paths meeting their personal potential and individual expectations. Moreover, the Bologna Reform, ensuring international recognition of qualifications, also provides students with the opportunity to continue their studies and to specialize in specific fields, both in Switzerland and abroad.

An additional unique aspect of SUPSI is that it meets the growing need to achieve a balance between educational requirements and working activity: whenever possible, courses are also conducted in parallel with professional activity. Special focus is also placed on students with family, sport or military commitments.



One SUPSI, four facets

SUPSI operates in four main spheres:

First and Second Level University Programmes, (Bachelor's and Master's), Continuing Education, Applied Research and Services to Companies & Territorial Support.

The university study programmes are described in detail in the following pages. Other important areas in which SUPSI operates are illustrated here.

Continuing Education

SUPSI Continuing Education courses provide professionals with the opportunity to update, develop and specialize their knowledge throughout their careers (Life-Long Learning), with courses in the following fields: construction, energy and environment, design, engineering, teacher training, health care, management, tax law, social sciences, music and theatre.

As for the Bachelor's programmes, didactics in this area are based on a methodology combining practice and theory, implementing cutting-edge scientific methods and know-how.

In addition to the short-term courses for which attendance certificates are awarded, continuing education programmes can lead to the following qualifications: Master of Advanced Studies (MAS) or Executive Master of Business Administration (EMBA), Diploma of Advanced Studies (DAS) and Certificate of Advanced Studies (CAS).

Courses are targeted at professionals and companies, institutions, organizations or associations. With its experience and knowledge of Bachelor and Master programmes and above all its research, SUPSI can offer high quality and constantly updated scientific and didactic courses.

Applied Research and Services to Companies in the Area

Since its foundation, SUPSI has conducted numerous research projects, associated mainly with the scientific topics related to the range of courses offered. The large number of applied research projects undertaken allow SUPSI to contribute directly to the economic and social development of the area. In fact, the university makes its expertise available to the local economy, collaborating in projects predominantly executed with small and medium-sized companies in Southern Switzerland.

This activity falls under the institutional mandate, which aims to promote the transfer of expertise and technology from the university to companies. SUPSI participates in a number of European research programmes.

A broad range of services are offered to companies, public institutions and organizations: development of company projects, surveys and evaluations, market research, technology transfer, management procedures and methodologies, diagnostic tests, quality certifications, risk analyses, to mention only a few.



Degrees

Study programmes are divided into first-level university education leading to *Bachelor of Arts* or *Bachelor of Science* qualifications, and second-level university education leading to *Master of Arts* or *Master of Science* qualifications.

The degree courses cover a wide range of subject areas and are taught by qualified professional teachers, professors and teachers-researchers. Cutting-edge and practice-oriented scientific educational programmes lead to university qualifications that are recognized both in Switzerland and internationally.

Degree courses (Bachelor's and Master's) can be attended full-time or, in some cases, in parallel with professional activity, enabling students to balance their studies with their professional, family or sporting commitments.

Degree Programmes

Bachelor

At the Bachelor's level, Professional Universities (SUP) provide students with a broad education and basic knowledge that lead to a university qualification.

Bachelor's degree programmes last for three years, at the end of which the following federally recognised qualifications are awarded: Bachelor of Arts (design/conservation, architecture, theatre, music, education), or Bachelor of Science (economics and finance, health care, engineering, social sciences). Bachelor's degrees are by nature generalist and qualify the holders to practice the specified profession or to continue their studies with a Master's programme specializing in one specific subject area.

Master

Master's degree programmes complete the academic curriculum by means of a supplementary period of study ranging from three to four semesters. Bachelor graduates are already in a position to find appropriate employment, but further study at Master's level will allow them to specialize on specific research fields. The following degrees are awarded: Master of Arts (design/conservation, education, music), or Master of Science (economics and finance, engineering). SUPSI Bachelor graduates can continue their studies by attending specialization or Master's courses at SUP institutions or at universities. Equally, graduates from other SUP institutions or universities may also be admitted to SUPSI Master's programmes.

Source: Annual Report 2010

414

Graduates from Bachelor's degree programmes

160

Graduates from Master's degree programmes

69

Graduates from MAS/EMBA degree programmes

The Bologna Reform

Degrees awarded by SUPSI conform with the Bologna Reform, but what does this mean exactly? The objective of the Bologna Process, or Reform, which began officially on 19 June, 1999 with the signing of the Bologna Declaration, is to attain long-term improvement in terms of student mobility and collaboration between different educational institutions, both within and outside Europe. 30 countries, including Switzerland, undertook to reach the Bologna Declaration objectives by 2010.

The primary objectives are the transparency and comparability of qualifications in the interests of European mobility.

A number of reforms have been implemented in order to achieve these objectives, including the establishment of first level (Bachelor) and second level (Master) study programmes, and a transparent system of didactic credits (ECTS) in order to facilitate the comparability of qualifications obtained in different countries.

ECTS didactic credits

What are ECTS? This acronym stands for the European system for the recognition, transfer and accumulation of educational credits (European Credit Transfer System). This system is student-focused and based on the workload - in the form of courses, practical work, laboratory work, projects or work done at home - required in order to reach the objectives of a study programme. Starting from the assumption that one ECTS credit corresponds to a student workload of approximately 30 hours, it is calculated that in one academic year of full-time study 60 ECTS credits are acquired (1,800 hours of work). Bachelor's programmes require 180 credits, while Master's programmes require 90-120 supplementary credits.

30

hours of work, equivalent to approximately 1 ECTS credit

180

credits required for a Bachelor's Degree

90-120

credits required for a Master's Degree



Study Programmes

SUPSI offers three types of study programme: full time, in parallel with professional activity, flexibility. These options are the result of the principles and values of the university, such as strength, originality and partnership, and express coherency with the SUPSI mandate.



Full time

Studies are conducted full time and last for three years. Students following this type of programme can experience the work-place through internships, projects in companies, workshops and laboratories. A wonderful opportunity for students to get to know interesting businesses and to establish the first useful contacts for their future careers.

Full time programmes specify weekly attendance in courses from September to June (some courses may begin before the official start of the academic year), for a total duration of three years.

In Parallel with Professional Activity

Courses last for four to five years and are designed for students who also work professionally in an area related to their chosen field of study. Classroom attendance is required one day and two evenings per week, or two and a half days per week, depending on the degree course. The knowledge acquired by students during the academic part of this programme can be transferred to their working activity on a day-to-day basis.

Part-time study also provides the opportunity to achieve a balance between study and work commitments, and, therefore, the possibility of studying while continuing to work. Student/workers must have employment contracts of at least 50%.

This typology is offered by the following degree courses: Business Management, Social Work, Architecture, Civil Engineering, Computer Science, Engineering and Management and Upper Secondary School Teaching.

Flexibility

Students following Flexibility programmes can continue to meet their personal or professional commitments while also attending courses, thanks to a personalized timetable respecting their availability and interests. This programme lasts for a period of four to six years. Study requirements can be balanced with family, sporting career, artistic or military obligations for students who can certify that their commitment to these activities amounts to at least 50%.

Flexibility programmes differ from both full time courses and courses in parallel with professional activity since the university programme is designed to meet the student's individual requirements, while also ensuring equal treatment in terms of content and didactic quality.

This typology is offered by the following degree courses: Business Administration, Social Work, Visual Communication.



Learning without limits

SUPSI is proud of its values, which include internationality, originality and innovation. In order to remain true to these values, international exchanges between students and collaborators are promoted, maintaining a consistently high level of language teaching.

Mobility

SUPSI participates in the Erasmus programme, which gives students the opportunity, during their Bachelor-level studies, to spend one or two semesters at a partner European university. Students from these same partner universities are also warmly welcomed at SUPSI. An additional objective is to develop the international dimension of university teaching, fostering cooperation between institutions, promoting student, teacher and university staff mobility, improving the level of transparency and academic recognition of studies and qualifications.

Languages

As part of the study programme SUPSI verifies the students' competences in the required languages, English and German. Linguistic skills in the academic environment enrich the learning process and enhance social and personal skills. They are also of fundamental importance for the workplace, enabling professional interaction with other countries. For these reasons, students at SUPSI can follow annual courses in English and/or German.

(Except for students attending courses conducted by the Department of Formation and Learning).

Experiencing the workplace

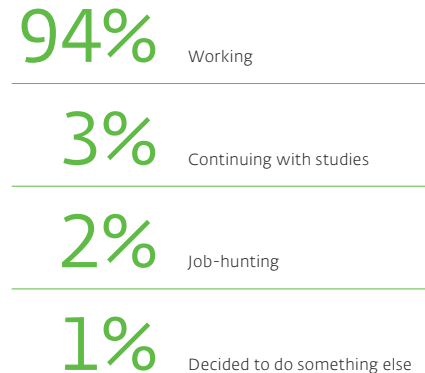
SUPSI students are assisted in the job-seeking process; appropriate action is taken in order to facilitate, finalise and direct the search for professional employment.

Since SUPSI is a vocational university, it naturally cultivates preferential relations and contacts with the organizations operating professionally in the local area. SUPSI assists its students and graduates in their search for employment and offers high-quality courses aimed at successful career development, in both professional and personal terms.

As far as external relations are concerned, SUPSI has developed rapidly partly as a result of profitable collaboration with Cantonal, Swiss and international partners, which has led to the establishment of more than 200 agreements. These relations are of fundamental importance to the university in terms of realizing its mission and its vision for the future.

The partnership areas are: Federal, Cantonal and Municipal Administration Authorities, the National Fund for Scientific Research, the Commission for Technology and Innovation and European Research Programmes, Foundations, Professional Associations, Non-Profit Associations, Universities and other academic institutes in Ticino, Switzerland, Northern Italy, Europe and world-wide.

Employment status 1 year after graduation.
Source: follow up 2009





Living in Southern Switzerland

SUPSI is attractively located in Southern Switzerland, at the heart of Europe, in a region that is one of the most highly developed in terms of industry, technology, research and financial services. The various SUPSI departments are framed by spectacular natural surroundings: lakes, hills, parks, mountains and geographic position work together to create a temperate, Mediterranean climate and a wonderful quality of life.

At the cross-roads between the cultural opportunities provided by two major cities, Zurich and Milan, Southern Switzerland is a culturally forward-looking region in terms of celebrated artists and cultural events.

Student Services

Nursery

SUPSI nido enables students to balance their family and work/study commitments.
www.supsi.ch/nido

Library

The library offers a broad range of international books and periodicals representing numerous subject areas. Its nine centres are also equipped with multimedia tools and numerous spaces for individual study.
www.supsi.ch/biblioteca

Centre for Languages and International Relations

The Centre organises German and English courses for SUPSI students, and Italian courses for foreign students, with the aim of fostering study exchange periods (Erasmus).
www.supsi.ch/clir

Continuing Education

The Help Desk provides assistance regarding the choice of Continuing Education courses.
www.supsi.ch/fc

Gender

This service promotes concrete awareness-raising actions and projects in order to integrate the gender dimension and equal-opportunity related issues.
www.supsi.ch/gender

Canteen

All SUPSI departments have reasonably priced canteens and/or cafeterias and snack services for students.

Sustainable mobility

SUPSI promotes sustainable mobility by means of frequent public transport links between departments and with main FFS railway stations.

Study Advisory Service

The Service provides students with information regarding the various courses conducted by SUPSI. It has the further aim of providing students and graduates with career guidance in order to assist them in their search for future employment.
www.supsi.ch/go/consulting

Counselling Service

The Counselling Service offers psychological support to those with personal, interpersonal, emotional or relational difficulties related to the university and/or professional sphere.
www.supsi.ch/ascolto

Sport USI/SUPSI

This service promotes the practice of numerous physical activities and sports for students, professors and collaborators.
www.supsi.ch/sport

Admission Procedures

Students with vocational school-leaving certificate in a related area to the one selected

All students with vocational school-leaving certificate in an area related to the selected course of study are usually granted direct admission. This does not apply to the degree courses conducted by the Department of Formation and Learning, for which prospective students must complete a one-year “bridge” course at the Bellinzona Liceo. In some cases, instead of following the “bridge” year, students can be required to complete a work experience period of approximately one year, and/or to pass an admission examination.

Students with vocational school-leaving certificate in a non-related area to the one selected

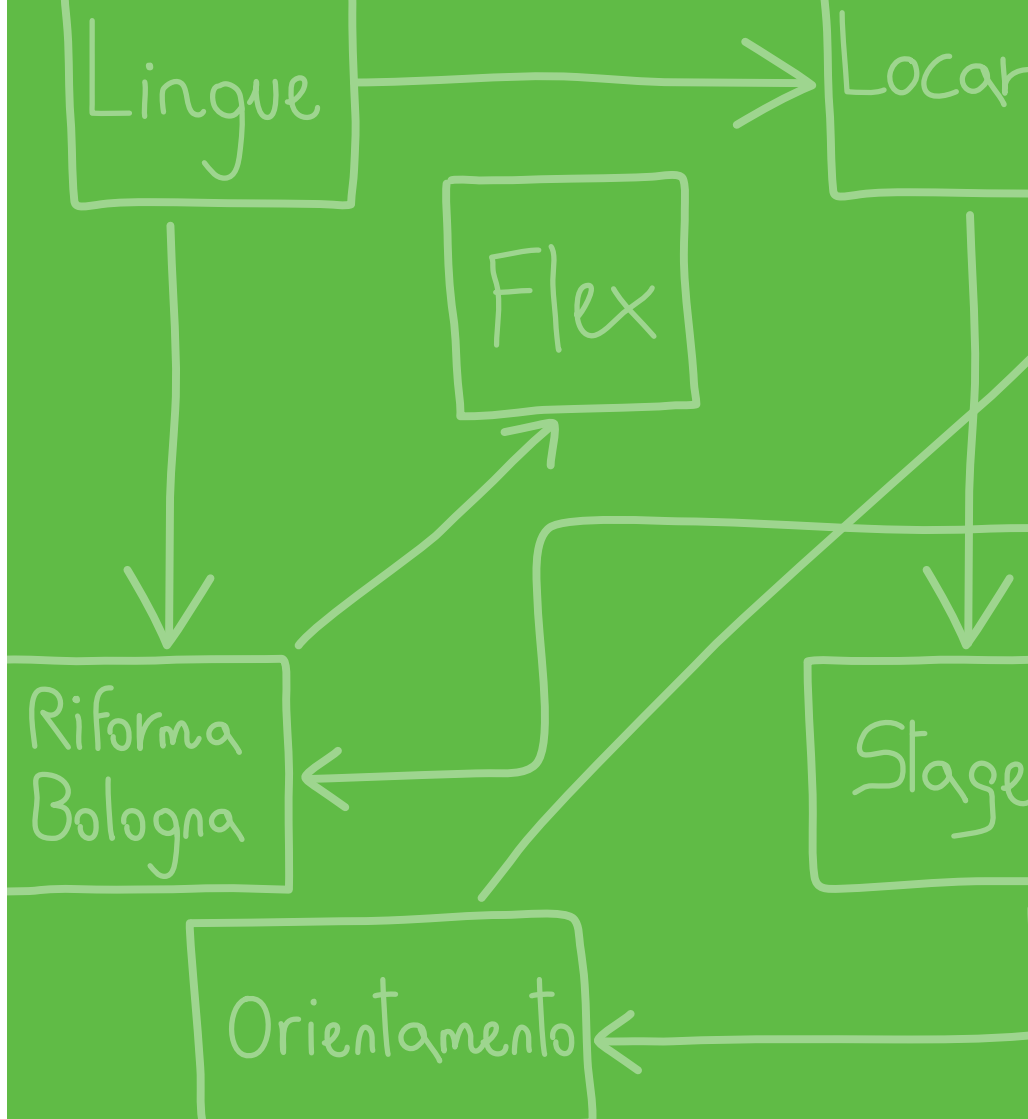
Prospective students whose vocational school-leaving certificate is not related to the selected course of study have different admission options, depending on the programme. The knowledge required for the course can be acquired by attending a one-year foundation course at SUPSI, or by completing internship and work experience periods. An admission examination is often also required. Further details can be found in the individual course descriptions.

Students with high school Matura certificate

Students with high school Matura certificate have direct admission to the Pre-Primary and Primary School Teacher Training Bachelor’s programmes. The other degree programmes have different admission procedures: in some cases, prospective students are required to complete an integrative year consisting of internships and complementary modules; in others cases, a work experience period is sufficient. Further details can be found in the individual course descriptions.

Admission on “Dossier”

Applicants aged more than 25 and who lack the required qualifications may apply for admission on “dossier”. In this case, the following documents must be attached to the application: letter of motivation, curriculum vitae, academic qualifications and work certificates. Note that applicants must have significant work experience. (Except for the courses conducted by the Department of Formation and Learning).



Application Procedure

Application

Applications for most degree courses must be made by mid April. Applications for the courses conducted by the Department of Formation and Learning must be made by mid March.

A preliminary check is conducted at this point to ensure that the admission requirements have been met.

Registration

The registration form must be sent to SUPSI Management by 31 July, except for the courses conducted by the Department of Formation and Learning, for which the deadline is 15 June. Registration forms received after this date will be accepted under reserve, provided places are still available and in order of arrival.

Matriculation is completed on payment of the fees for the first semester, following this the student card is issued and students are entitled to have their study credits certified.

Fees

SUPSI fees amount to CHF 1'600 per semester; this sum is reduced to CHF 800 for students with civil and fiscal domicile in Switzerland, Liechtenstein or Campione d'Italia. Supplementary costs are also charged for some courses. Semester fees may be higher for SUPSI Master's programmes conducted in collaboration with other universities. Semester fees for courses conducted by the Conservatory of Southern Switzerland amount to CHF 1'500, plus additional registration, examination and administration charges. The annual fees for programmes of the Scuola Teatro Dimitri amount to CHF 5'300 for Bachelor's programmes and CHF 800 for Master's programmes.

On-line applications: www.supsi.ch

Contacts

Study Advisory Service

(Servizio Orientamento)

Le Gerre

CH-6928 Manno

T +41 (0)58 666 60 24

F +41 (0)58 666 60 01

orientamento@supsi.ch

www.supsi.ch/go/consulting



Campus



Management

Le Gerre

6928 Manno

T +41 (0)58 666 60 00

F +41 (0)58 666 60 01

info@supsi.ch

www.supsi.ch



Department of Environment Construction and Design

Campus Trevano

6952 Canobbio

T +41 (0)58 666 63 00

F +41 (0)58 666 63 09

dacd@supsi.ch

www.supsi.ch/dacd



Department of Formation and Learning

Piazza San

Francesco 19

6600 Locarno

T +41 (0)58 666 68 00

F +41 (0)58 666 68 19

dfa@supsi.ch

www.supsi.ch/dfa





**Department of
Health Sciences**

Galleria 2
6928 Manno
T +41 (0)58 666 64 00
F +41 (0)58 666 64 01
dsan@supsi.ch
www.supsi.ch/dsan



**Department of
Innovative
Technologies**

Galleria 2
6928 Manno
T +41 (0)58 666 65 11
F +41 (0)58 666 65 71
dti@supsi.ch
www.supsi.ch/dti



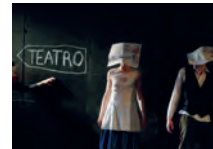
**Department of
Business and
Social Sciences**

Palazzo E
6928 Manno
T +41 (0)58 666 61 00
F +41 (0)58 666 61 01
dsas.economia@supsi.ch
dsas.sociale@supsi.ch
www.supsi.ch/dsas



Scuola Teatro Dimitri

6653 Verscio
T +41 (0)91 796 24 14
F +41 (0)91 796 23 93
scuola@teatrodimitri.ch
www.scuolateatro
dimitri.ch



Conservatory of Southern Switzerland

Via Soldino 9
6900 Lugano
T +41 (0)91 960 30 40
F +41 (0)91 960 30 41
info@conservatorio.ch
www.conservatorio.ch



**Departement
Gesundheit**

Physiotherapie
Graubünden
Weststrasse 8
7302 Landquart
T +41 (0)81 300 01 70
F +41 (0)81 300 01 71
dsan.landquart@supsi.ch
www.supsi.ch/dsan



**Fernfachhochschule
Schweiz**

Überlandstrasse 12
Postfach 689
3900 Brig
T +41 (0)27 922 39 00
F +41 (0)27 922 39 05
info@fernfachhochschule.ch
www.fernfachhochschule.ch



ma
gna

Orientamento

o

SUPSI

Editing

SUPSI, Study Advisory Service

Graphic design and layout

SUPSI, Laboratory of Visual Culture

